

ID	Task Name	Duration	Start	6/22	6/29	July	7/6	7/13	7/20	7/27	August	8/3	8/10	8/17	8/24	September	8/31	9/7	9/14	9/21	9/28	October	10/5	10/12	10/19	
1	<b>School To Weather Tight</b>	<b>108 days</b>	<b>Tue 7/1/08</b>																							
2	Wood Framing	75 days	Tue 7/1/08																							
3	Roofing	6 days	Fri 10/10/08																							
4	Dense-Glass	10 days	Tue 10/7/08																							
5	Windows	3 days	Wed 10/22/08																							
6	Stucco to Scratch Coat	16 days	Mon 10/27/08																							
7	Doors and Frames	3 days	Tue 11/18/08																							
8	Stamped Concrete	5 days	Fri 11/21/08																							
9	<b>School To Interior Completion</b>	<b>129 days</b>	<b>Fri 9/26/08</b>																							
10	Mechanical, Electrical, Plumbing and Fire Alarm -Rough In	74 days	Fri 9/26/08																							
11	Insulation	5 days	Thu 12/25/08																							
12	Drywall	15 days	Thu 1/1/09																							
13	Ceilings	15 days	Thu 1/22/09																							
14	Finishes	30 days	Thu 2/12/09																							
15	<b>Kitchen And Dinning Hall</b>	<b>223 days?</b>	<b>Tue 7/1/08</b>																							
16	Steel Erection	77 days	Tue 7/1/08																							
17	Metal Decking at Second Floor	5 days	Fri 10/10/08																							
18	Light Wight Concrete at Second Floor	5 days	Fri 10/17/08																							
19	Secound Floor Framing	10 days	Fri 10/24/08																							
20	Roof Decking	3 days	Fri 11/7/08																							
21	Insulating Concrete on Roof Decking	2 days	Wed 11/12/08																							
22	Roofing	4 days	Fri 11/14/08																							
23	Under Ground Plumbing at kitchen Area	14 days	Thu 11/13/08																							
24	Concrete Slab	4 days	Mon 12/1/08																							
25	Metal Stud Framing at First Floor	14 days	Fri 12/5/08																							
26	Exterior Finishes	60 days	Thu 12/25/08																							
27	Mechanical, Electrical, Plumbing and Fire Alarm -Rough In	1 day?	Mon 12/29/08																							
28	Insulation	5 days	Tue 12/30/08																							
29	Drywall	15 days	Tue 1/6/09																							
30	Doors And Frames	14 days	Fri 1/16/09																							
31	Ceilings	21 days	Thu 2/5/09																							
32	Finishes	60 days	Fri 2/13/09																							
33	<b>Main Hall</b>	<b>325 days?</b>	<b>Tue 7/1/08</b>																							
34	Steel Erection	126 days	Tue 7/1/08																							
35	Metal Decking at First and Secound Floor	10 days	Wed 12/24/08																							
36	Insulating Concrete on Roof Decking	2 days	Wed 1/7/09																							
37	Roofing	4 days	Fri 1/9/09																							
38	Concrete Slab	4 days	Thu 1/15/09																							
39	Metal Stud Framing	21 days	Wed 1/21/09																							
40	Exterior Finishes	60 days	Thu 2/19/09																							
41	Mechanical, Electrical, Plumbing and Fire Alarm -Rough In	1 day?	Mon 2/23/09																							
42	Insulation	5 days	Tue 2/24/09																							
43	Drywall	40 days	Tue 3/3/09																							
44	Dorrs and frames	14 days	Tue 4/28/09																							
45	Ceilings	40 days	Tue 4/28/09																							
46	Finishes	60 days	Tue 6/2/09																							
47	Site Work	50 days	Tue 7/21/09																							

Project: Sikh Gurdwara Phase 2  
 Date:10/8/2008

Task Split

Progress Milestone

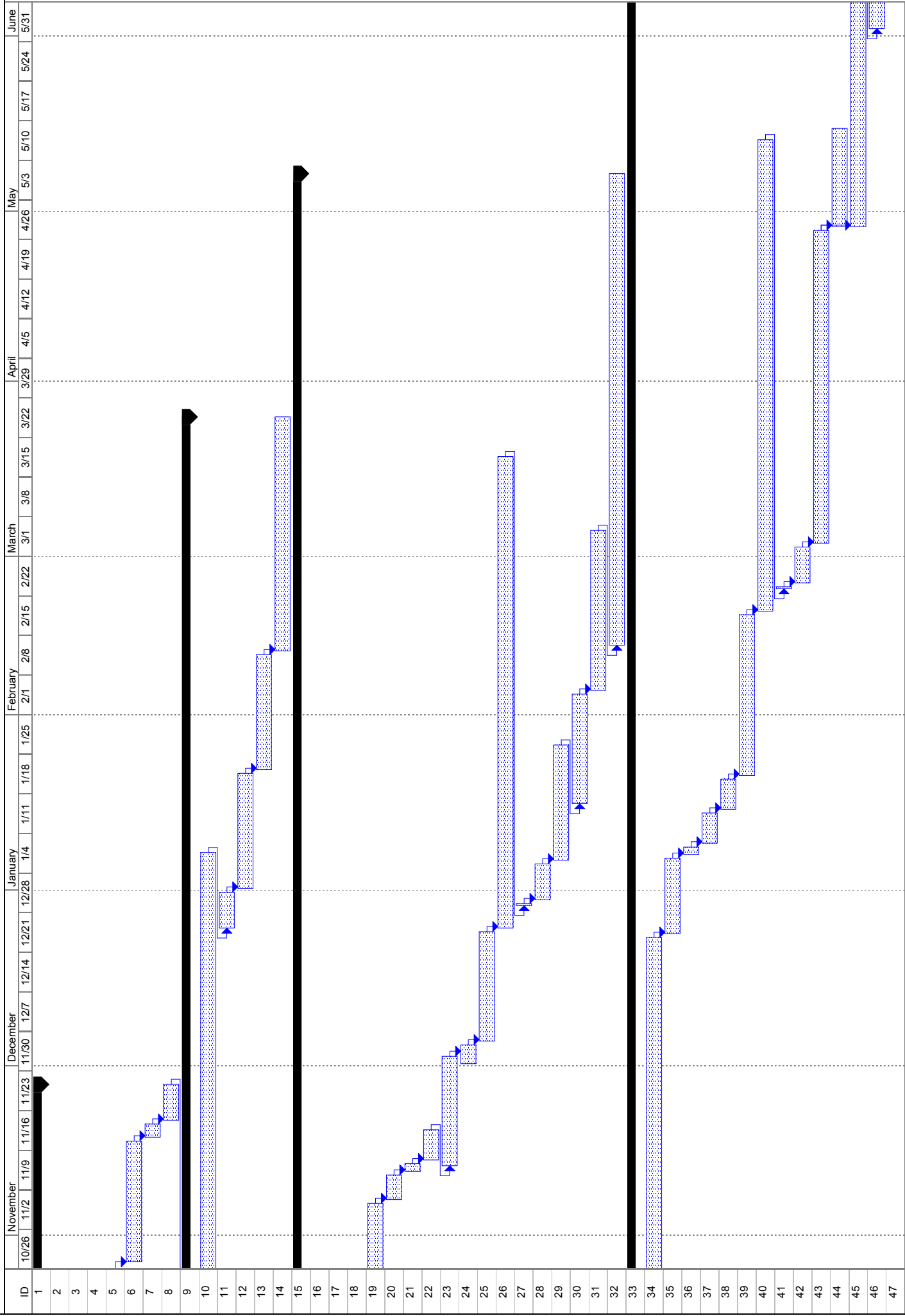
Summary Project Summary

External Tasks External Milestone

Deadline

Page 1

Sikh Gurdwara Phase 2



Task Split

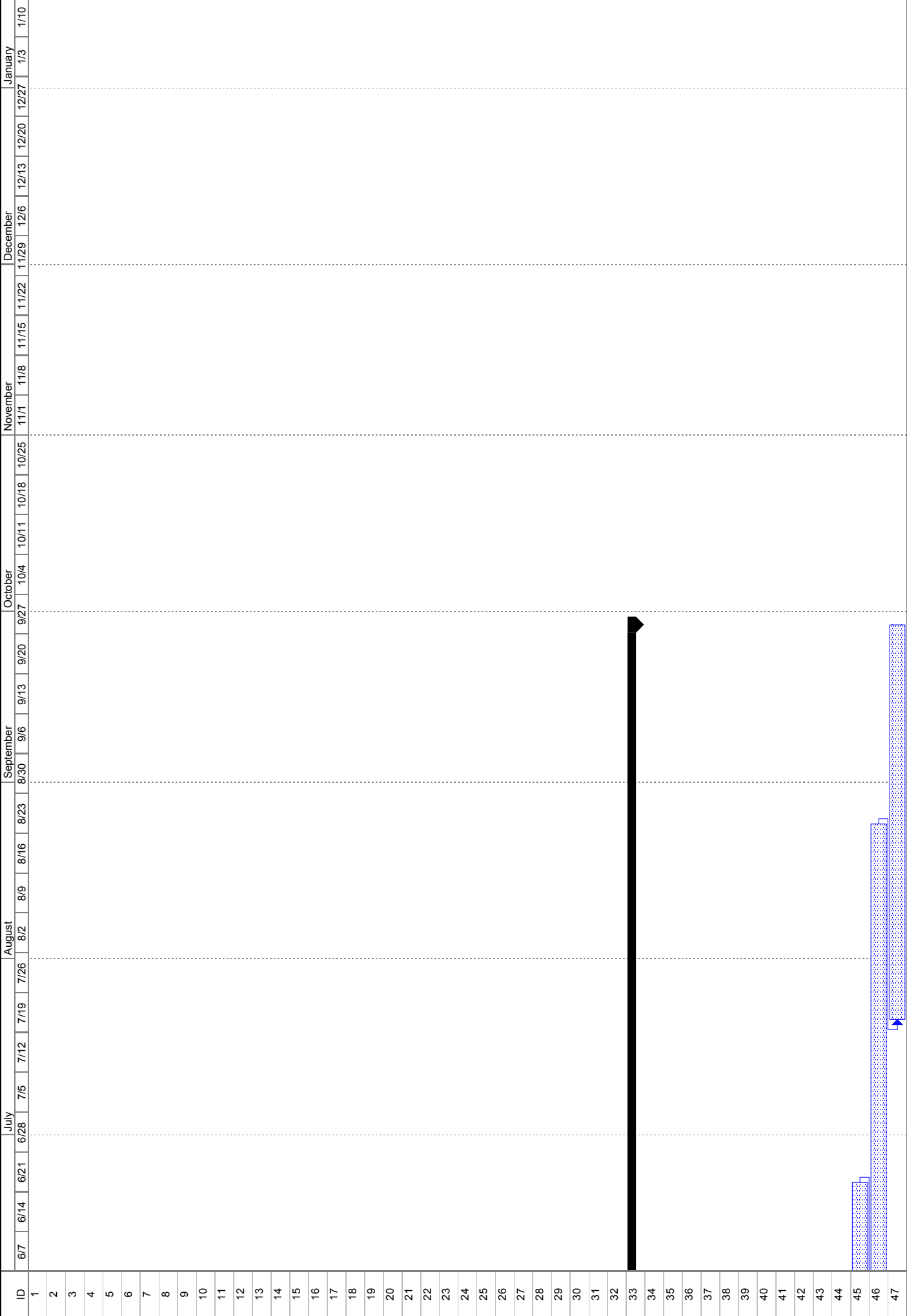
Progress Milestone

Summary Project Summary

External Tasks External Milestone

Deadline

Sikh Gurdwara Phase 2



Project: Sikh Gurdwara Phase 2  
 Date: 10/8/2008

Task Split

Progress Milestone

Summary Project Summary

External Tasks External Milestone

Deadline